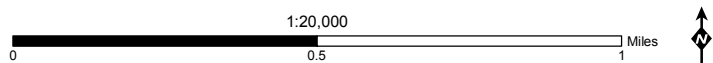
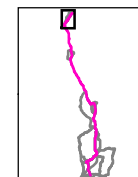
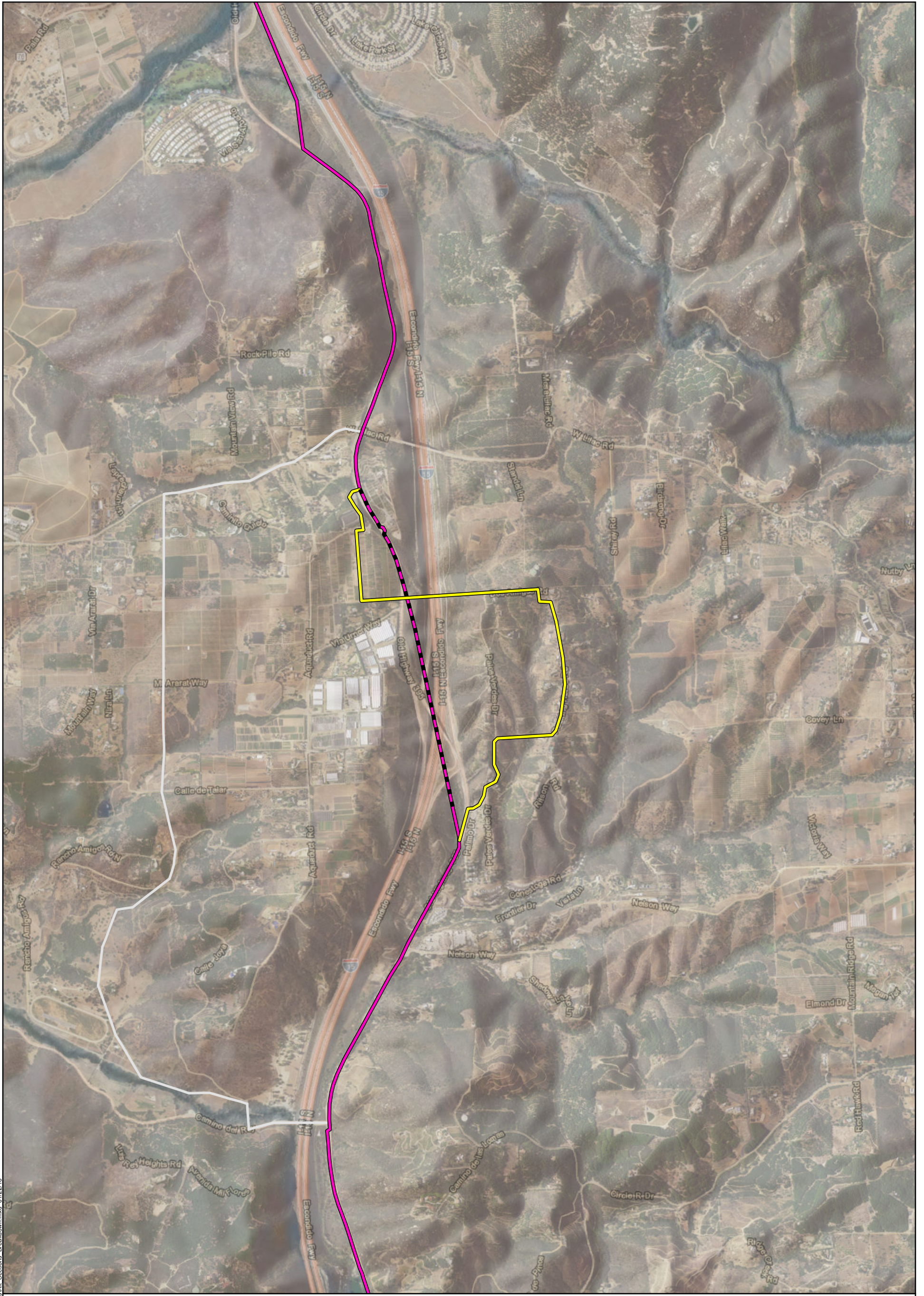


Attachment A: Proposed Project Route Segment Alternatives 1 of 19

Pipeline Safety & Reliability Project

- Proposed Route
- Rainbow Route Segment Alternative
- Corresponding Proposed Project Segment
- Other Alternative Sections
- Existing Transmission Line
- City/County Boundary

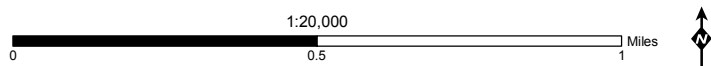
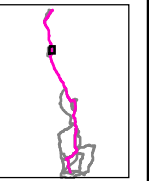


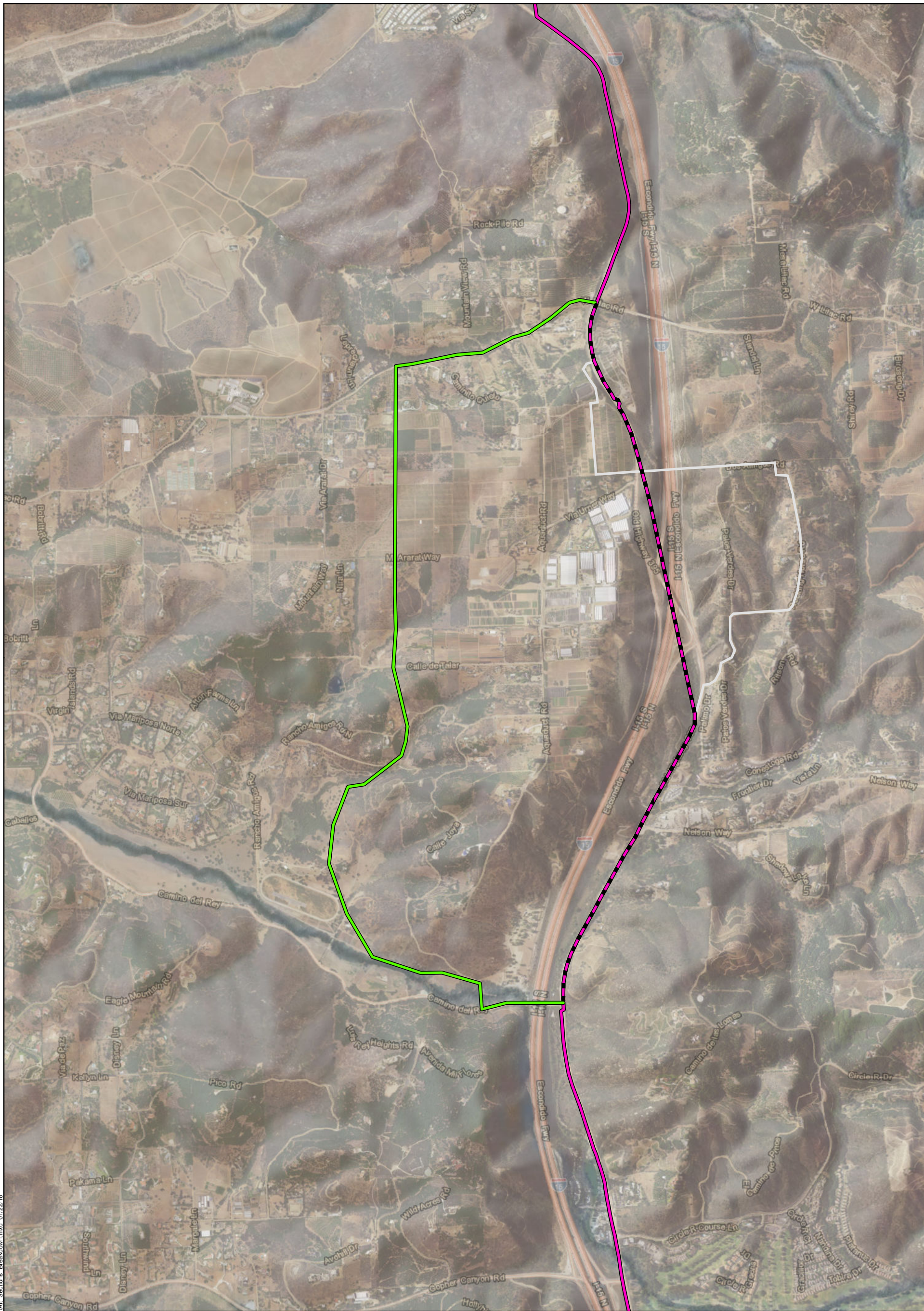


Attachment A: Proposed Project Route Segment Alternatives 2 of 19

Pipeline Safety & Reliability Project

- Proposed Route
- Rocking Horse Road Route Segment Alternative
- Corresponding Proposed Project Segment
- Other Alternative Sections
- Existing Transmission Line
- City/County Boundary

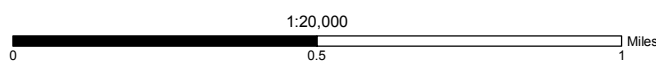
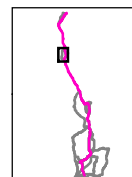


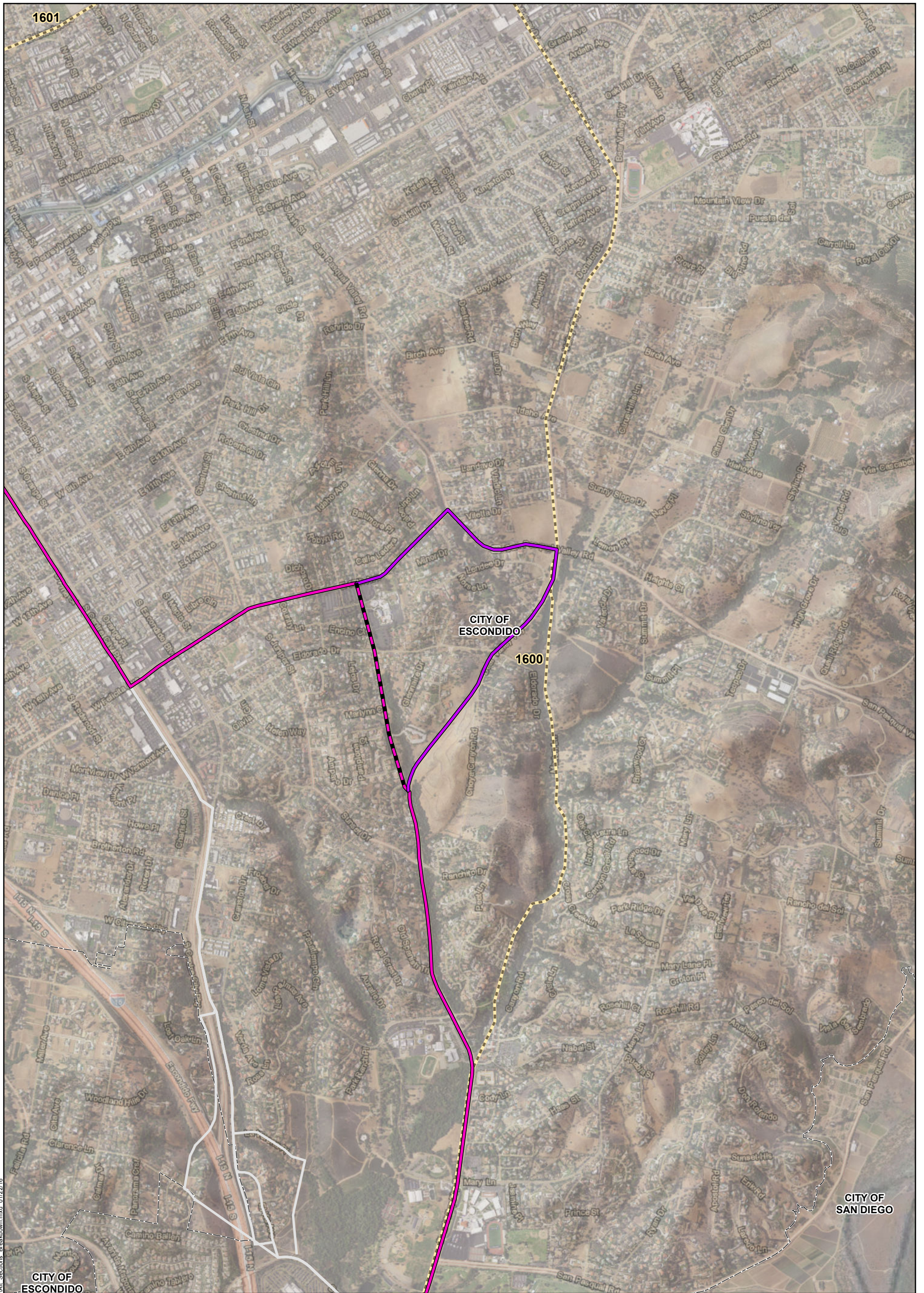


Attachment A: Proposed Project Route Segment Alternatives 3 of 19

Pipeline Safety & Reliability Project

- Proposed Route
- West Lilac Road Route Segment Alternative
- Corresponding Proposed Project Segment
- Other Alternative Sections
- Existing Transmission Line
- City/County Boundary

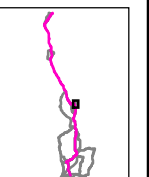




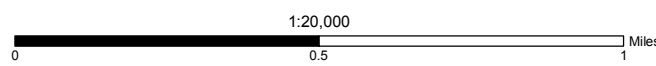
Attachment A: Proposed Project Route Segment Alternatives 4 of 19

Pipeline Safety & Reliability Project

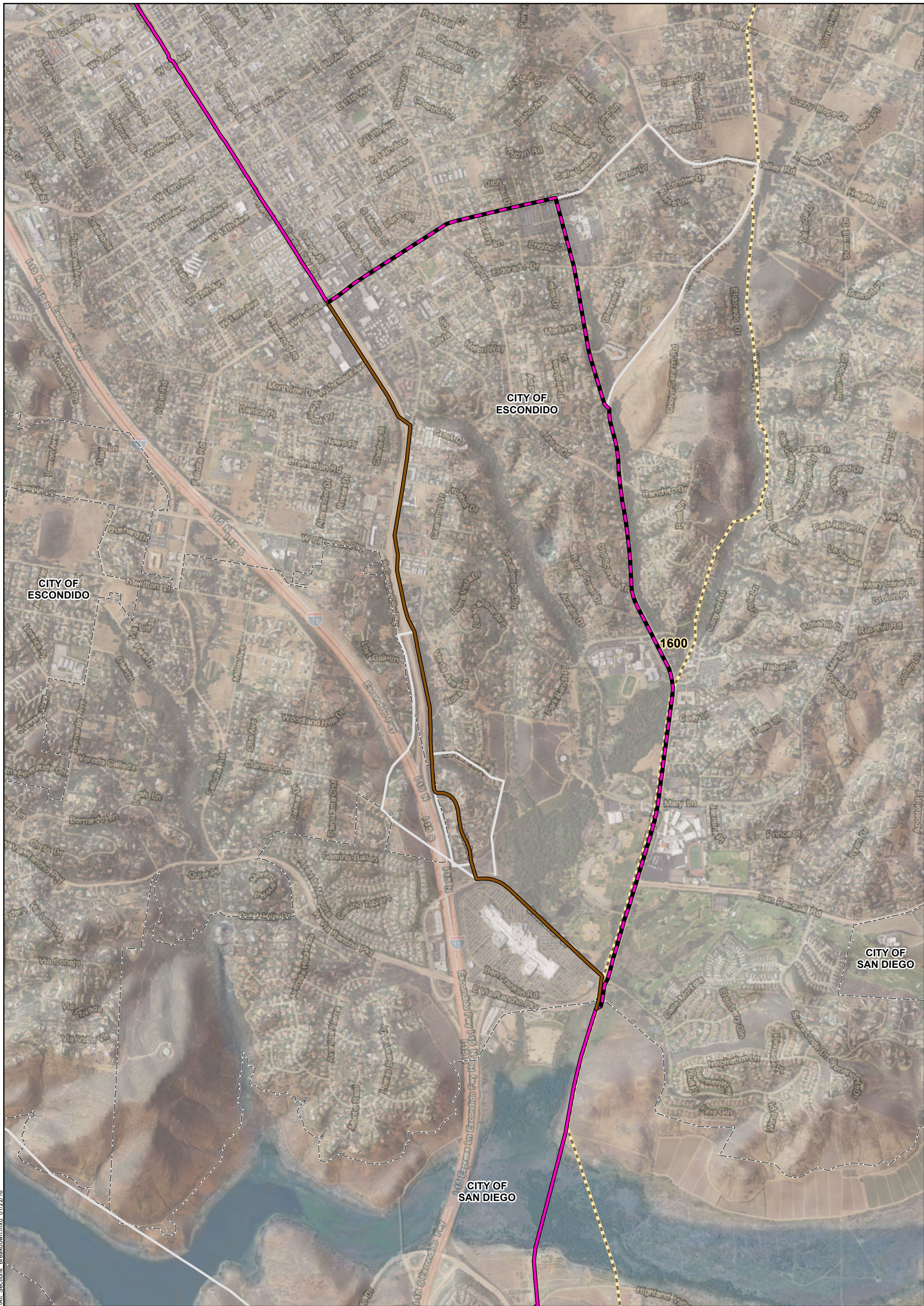
- Proposed Route
- Bear Valley Parkway Route Segment Alternative
- Corresponding Proposed Project Segment
- Other Alternative Sections
- Existing Transmission Line
- City/County Boundary



MXD:\SPEA\Alternatives\Alt_Section_Breakdown.mxd 01/22/16



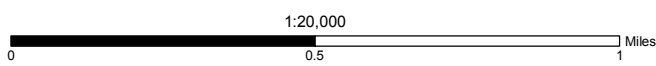
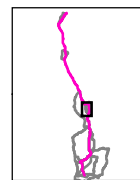
Confidential and proprietary material protected pursuant to Public Utilities Code Section 583 and General Order 66-C

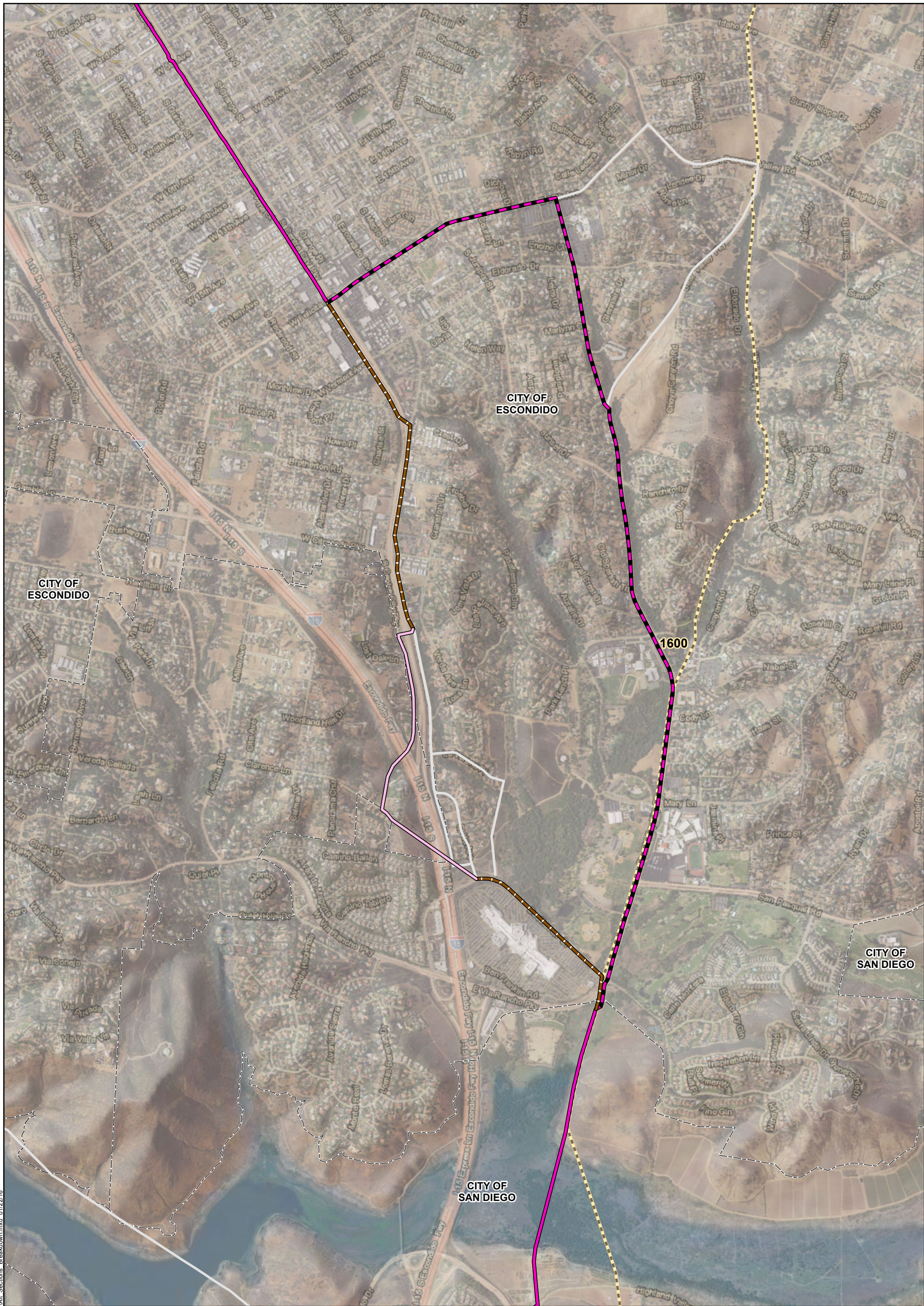


Attachment A: Proposed Project Route Segment Alternatives 5 of 19

Pipeline Safety & Reliability Project

- - - Proposed Route
- South Centre City Parkway/Escondido Boulevard Route Segment Alternative
- - - Corresponding Proposed Project Segment
- Other Alternative Sections
- - - Existing Transmission Line
- City/County Boundary

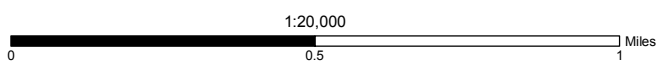
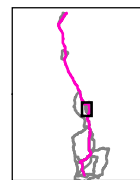


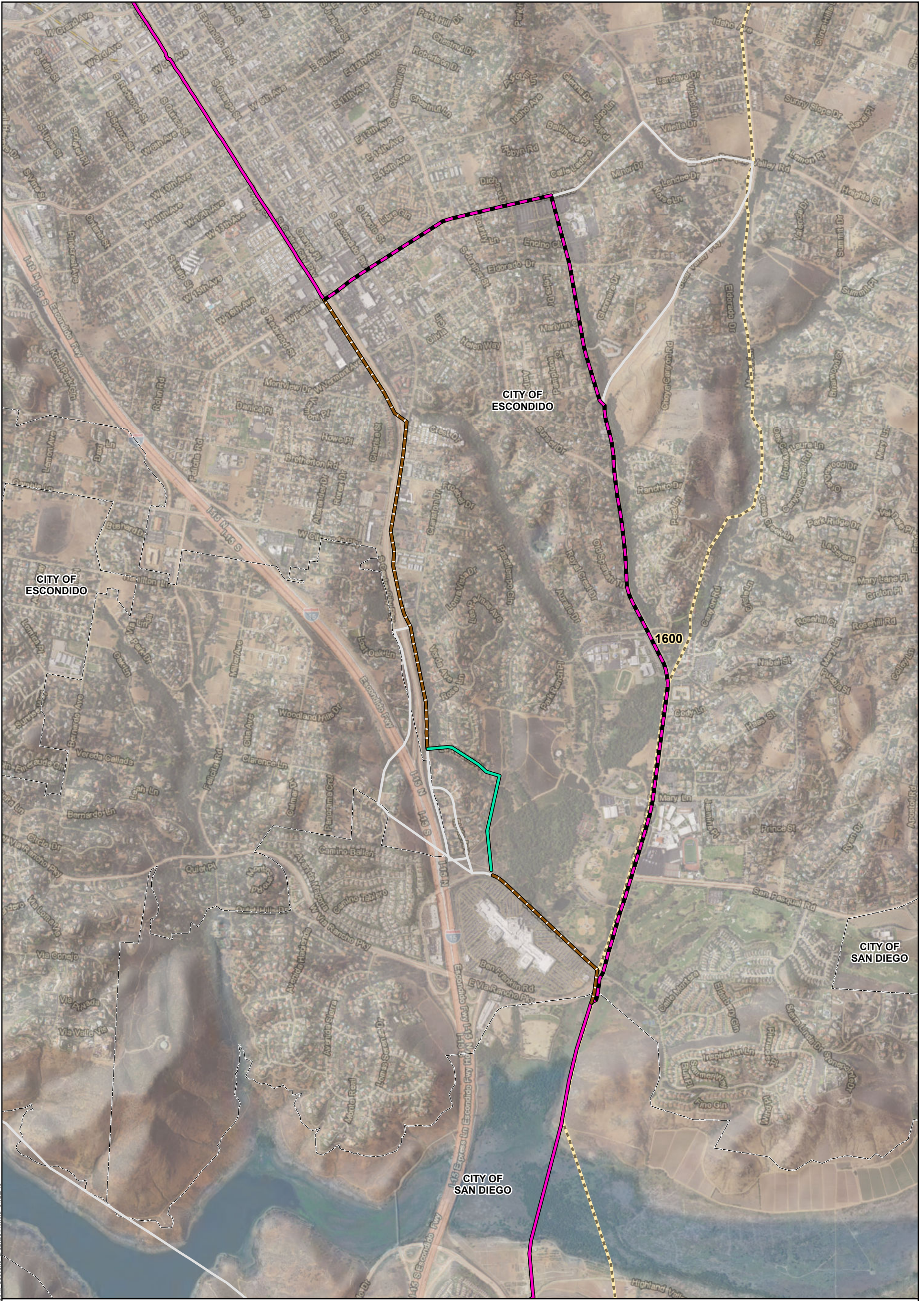


Attachment A: Proposed Project Route Segment Alternatives 6 of 19

Pipeline Safety & Reliability Project

- - - Proposed Route
- South Centre City Parkway Route Segment Alternative
- - - South Centre City Parkway/Escondido Boulevard Alternative shared section
- - - Corresponding Proposed Project Segment
- Other Alternative Sections
- - - Existing Transmission Line
- City/County Boundary

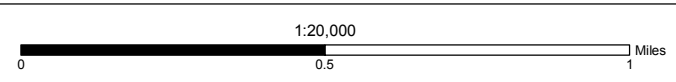
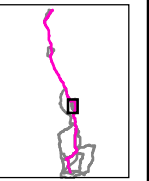




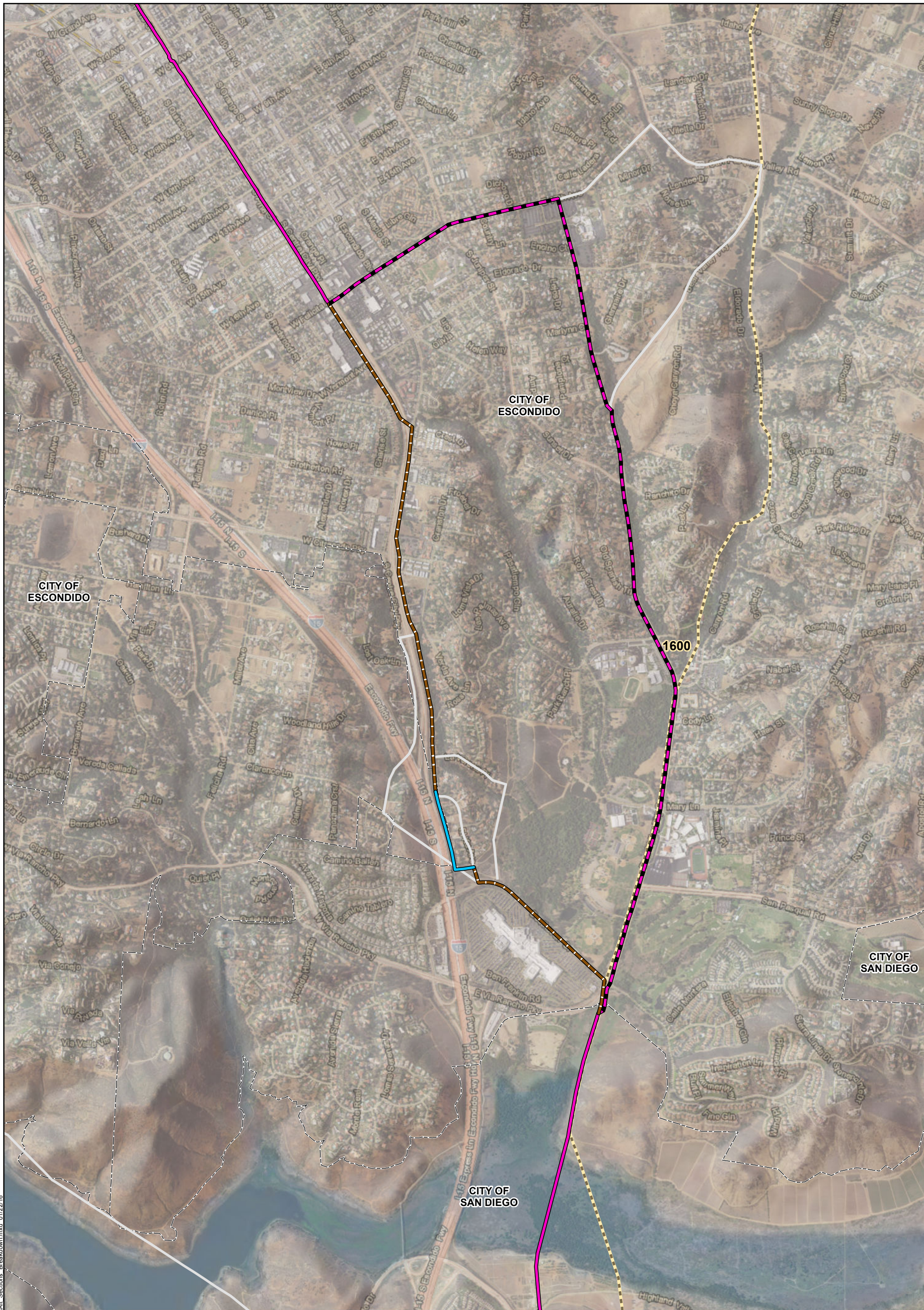
Attachment A: Proposed Project Route Segment Alternatives 7 of 19

Pipeline Safety & Reliability Project

- Proposed Route
- La Verona Route Segment Alternative
- South Centre City Parkway/Escondido Boulevard Alternative shared section
- Existing Transmission Line
- Other Alternative Sections
- City/County Boundary
- Corresponding Proposed Project Segment



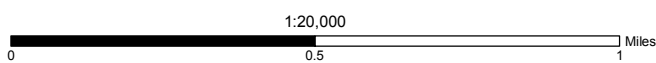
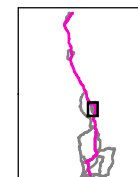
MXD:\PEA\Alternatives\Alt_Section_Breakdown.mxd 01/22/16

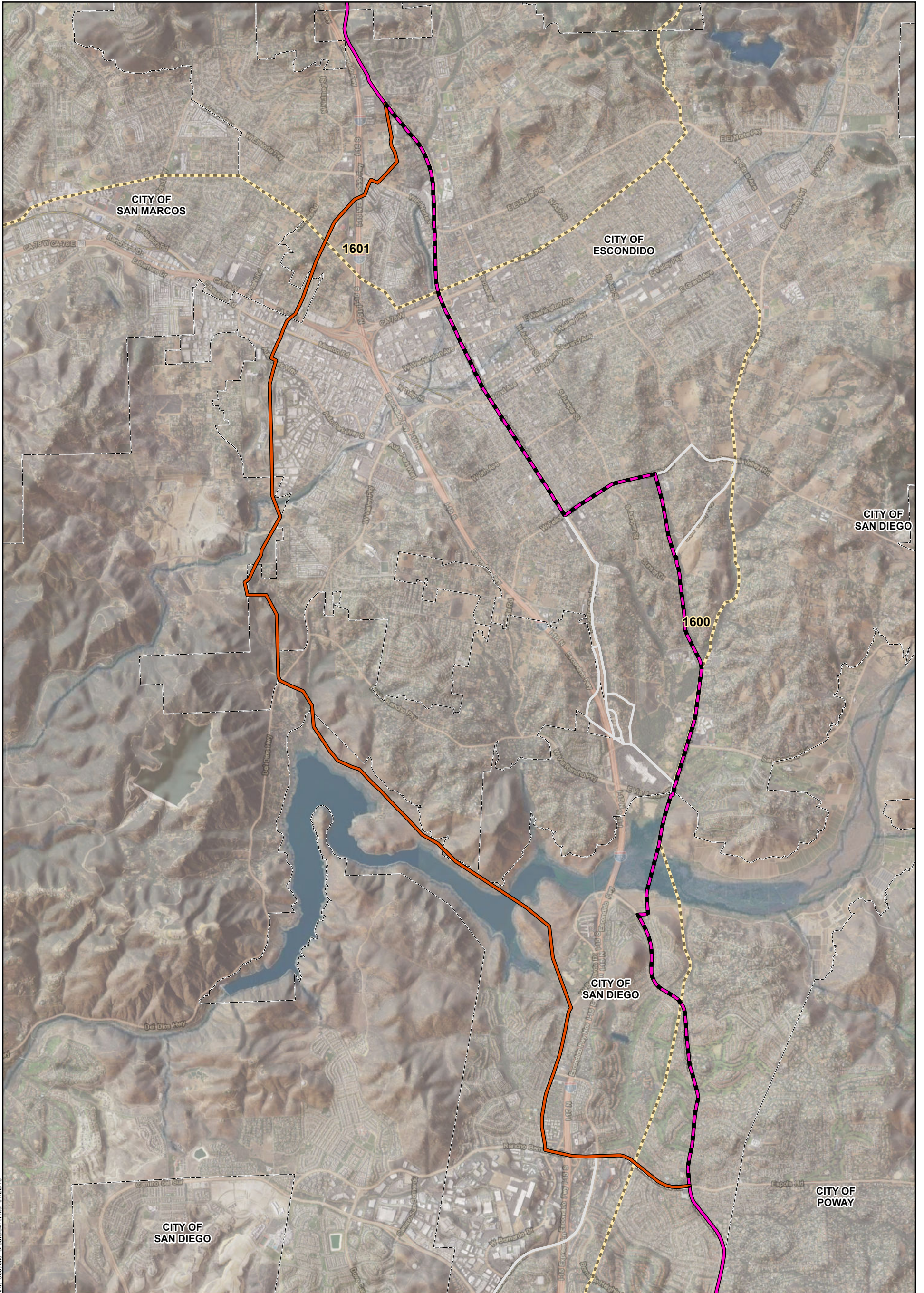


Attachment A: Proposed Project Route Segment Alternatives 8 of 19

Pipeline Safety & Reliability Project

- Proposed Route
- El Ku HDD Route Segment Alternative
- South Centre City Parkway/Escondido Boulevard Alternative shared section
- - - Corresponding Proposed Project Segment
- Other Alternative Sections
- - - Existing Transmission Line
- City/County Boundary

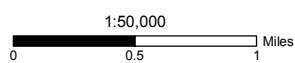
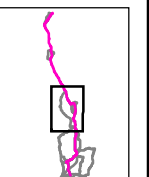


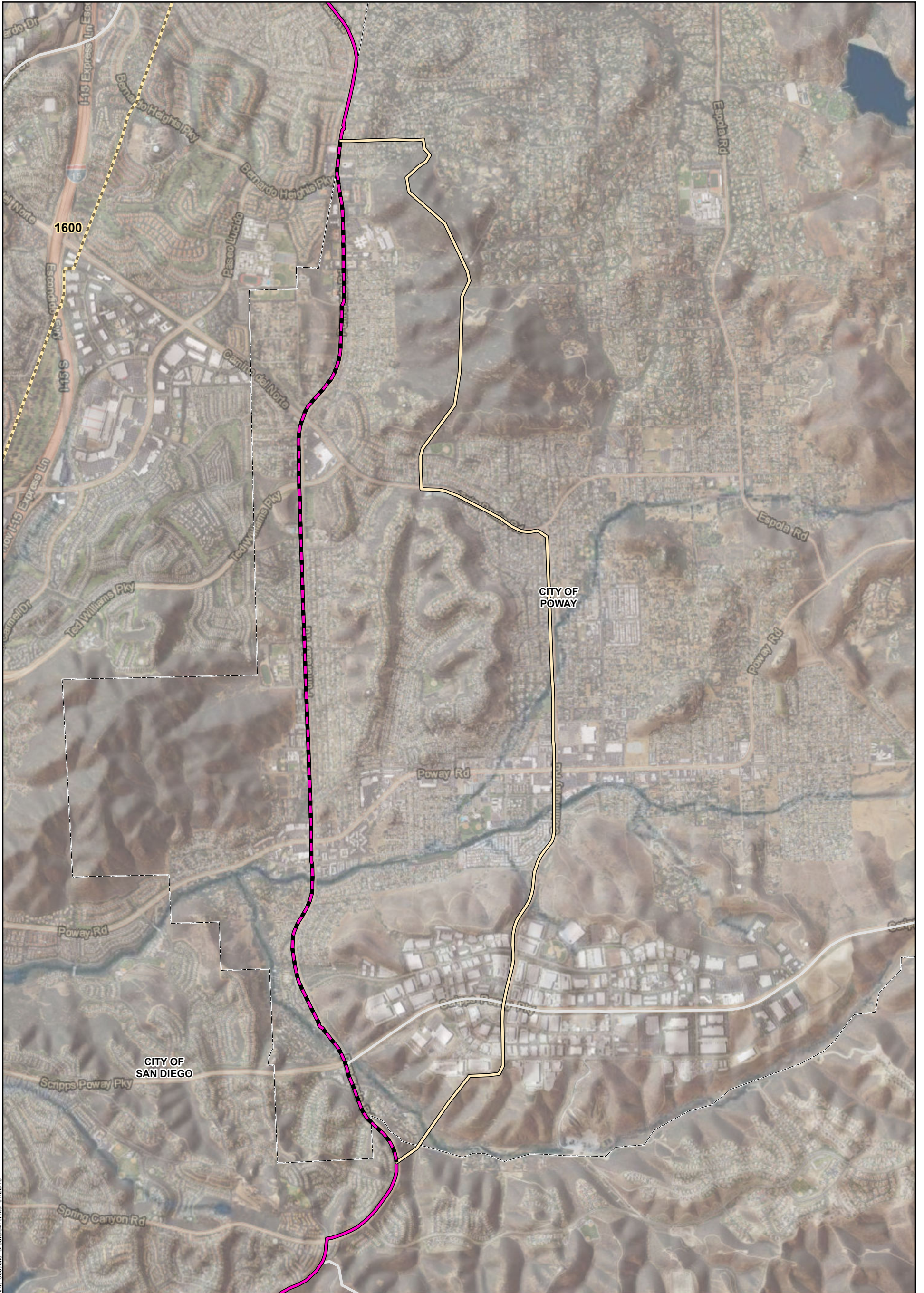


Attachment A: Proposed Project Route Segment Alternatives 9 of 19

Pipeline Safety & Reliability Project

- - - Proposed Route
- Lake Hodges Route Segment Alternative
- - - Corresponding Proposed Project Segment
- Other Alternative Sections
- - - Existing Transmission Line
- City/County Boundary



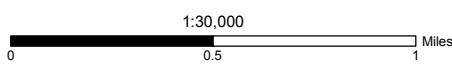
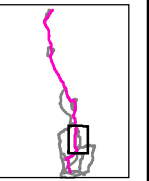


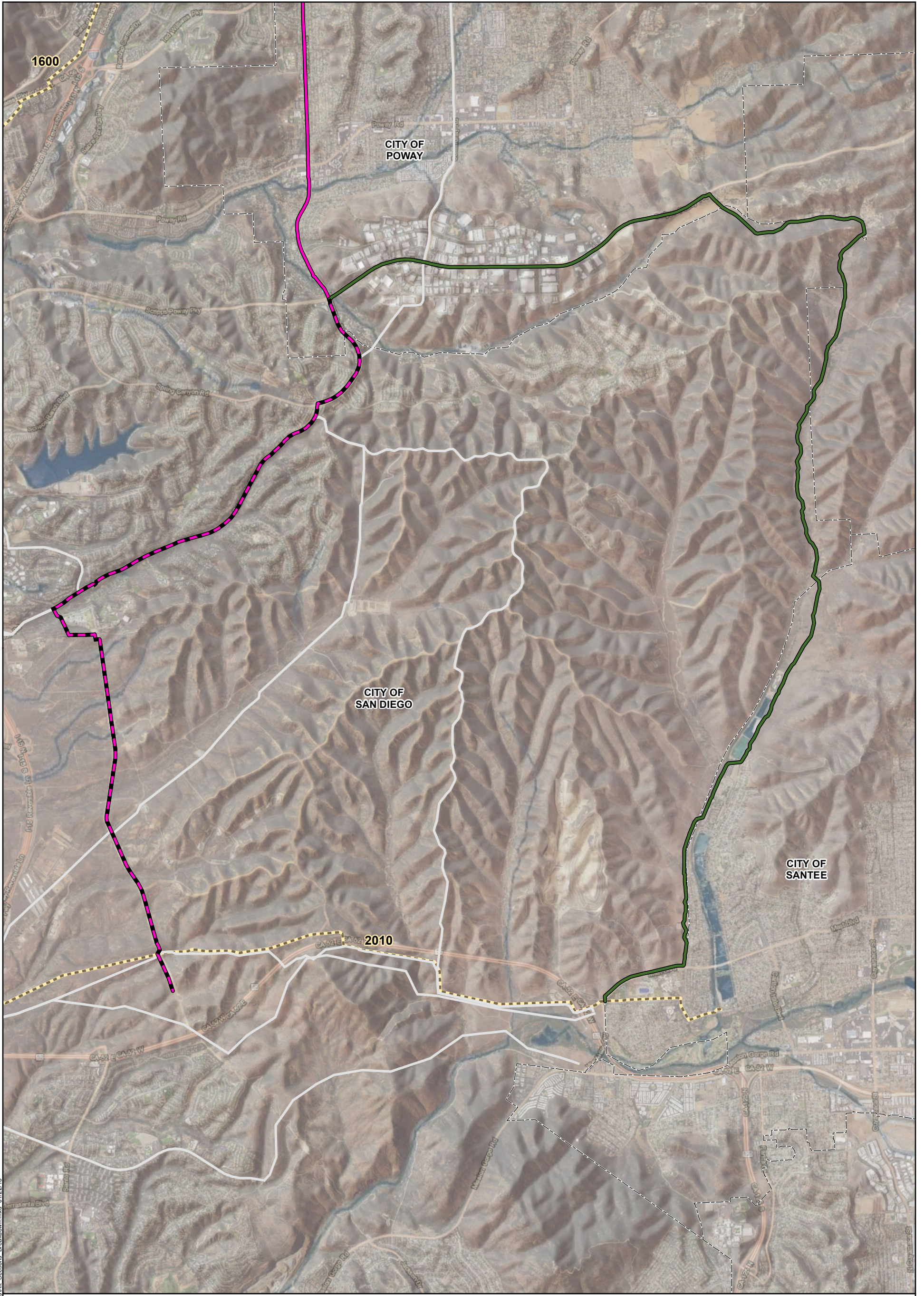
MXDs\PEAA\Alternatives\Alt_Sections_Breakdown.mxd 01/22/16

Attachment A: Proposed Project Route Segment Alternatives 10 of 19

Pipeline Safety & Reliability Project

- Proposed Route
- Community Road Route Segment Alternative
- Existing Transmission Line
- Corresponding Proposed Project Segment
- Other Alternative Sections
- City/County Boundary

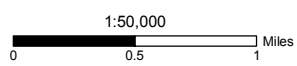
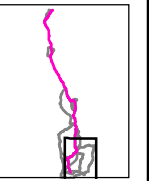




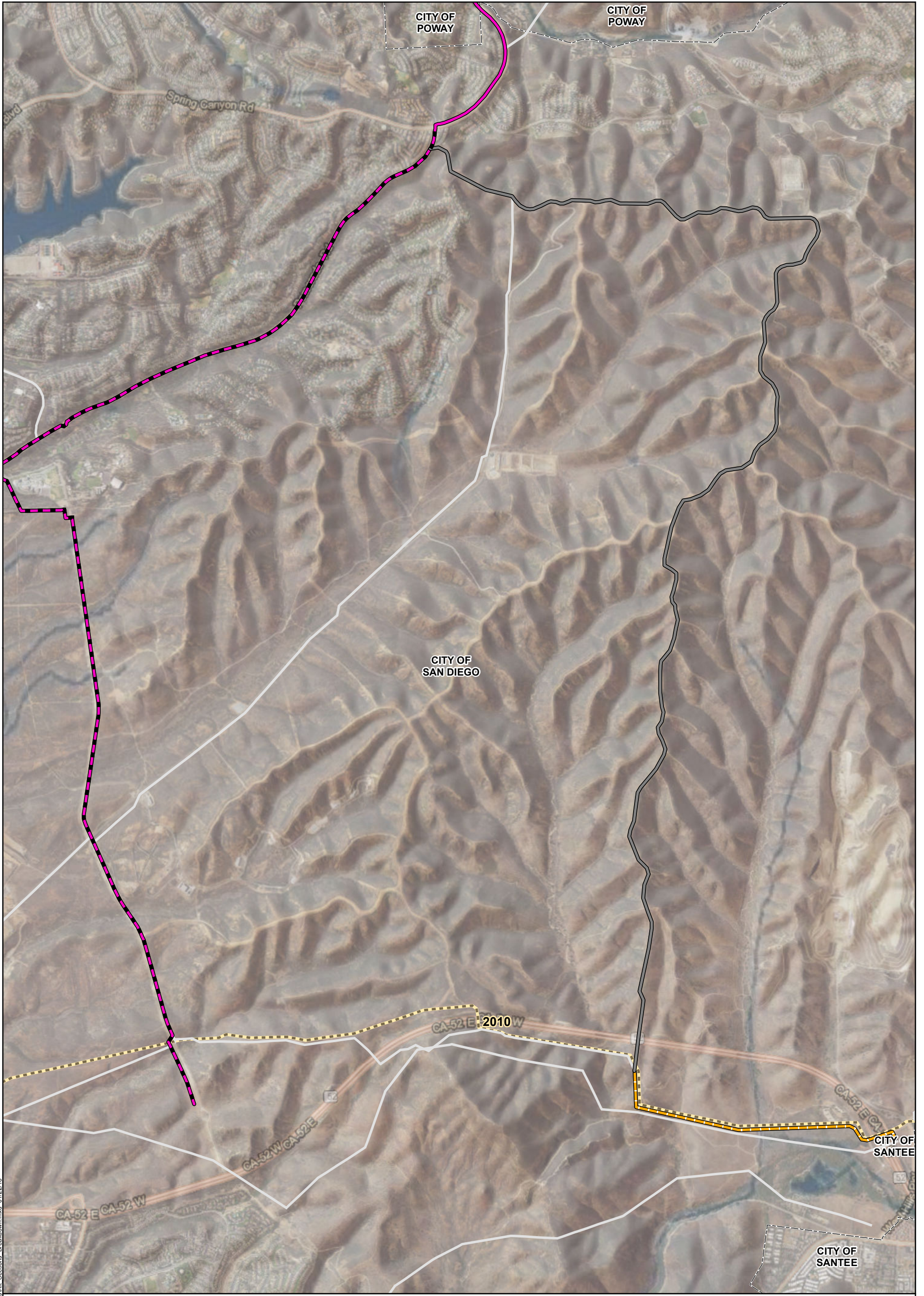
Attachment A: Proposed Project Route Segment Alternatives 11 of 19

Pipeline Safety & Reliability Project

- Proposed Route
- Scripps Poway Parkway Route Segment Alternative
- - - Corresponding Proposed Project Segment
- Other Alternative Sections
- - - Existing Transmission Line
- City/County Boundary



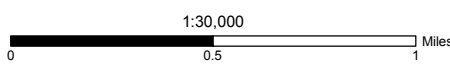
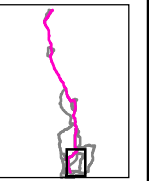
MXD:\PEA\Alternatives\Alt_Section_Breakdown.mxd 01/22/16



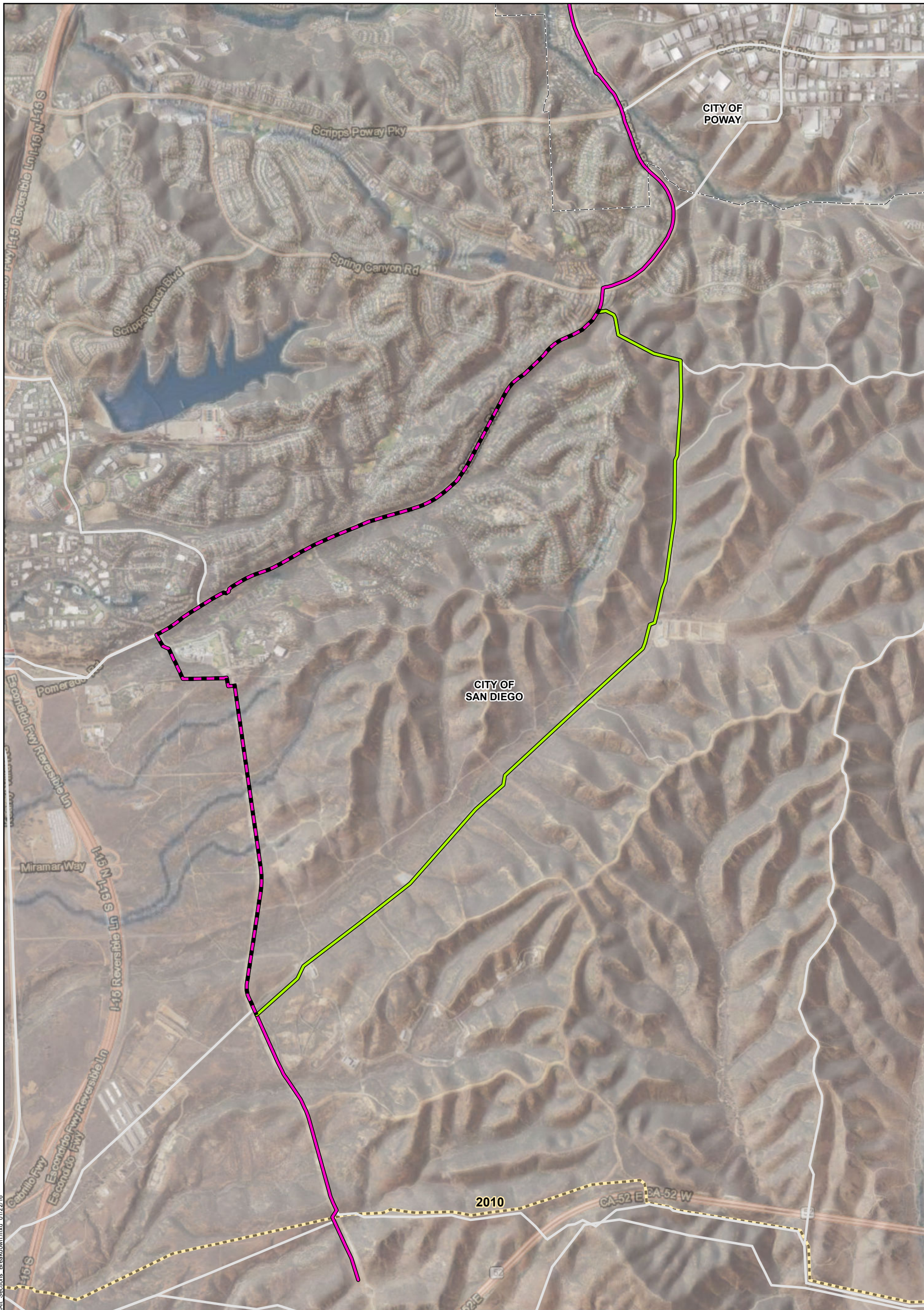
Attachment A: Proposed Project Route Segment Alternatives 12 of 19

Pipeline Safety & Reliability Project

- Proposed Route
- Spring Canyon Road Route Segment Alternative
- Existing Transmission Line
- Other Alternative Sections
- Corresponding Proposed Project Segment
- City/County Boundary



MXD:\PEA\Alternatives\Alt_Section_Breakdown.mxd 01/22/16

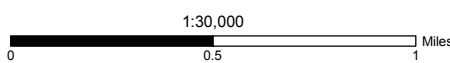
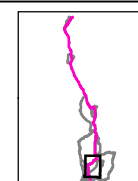


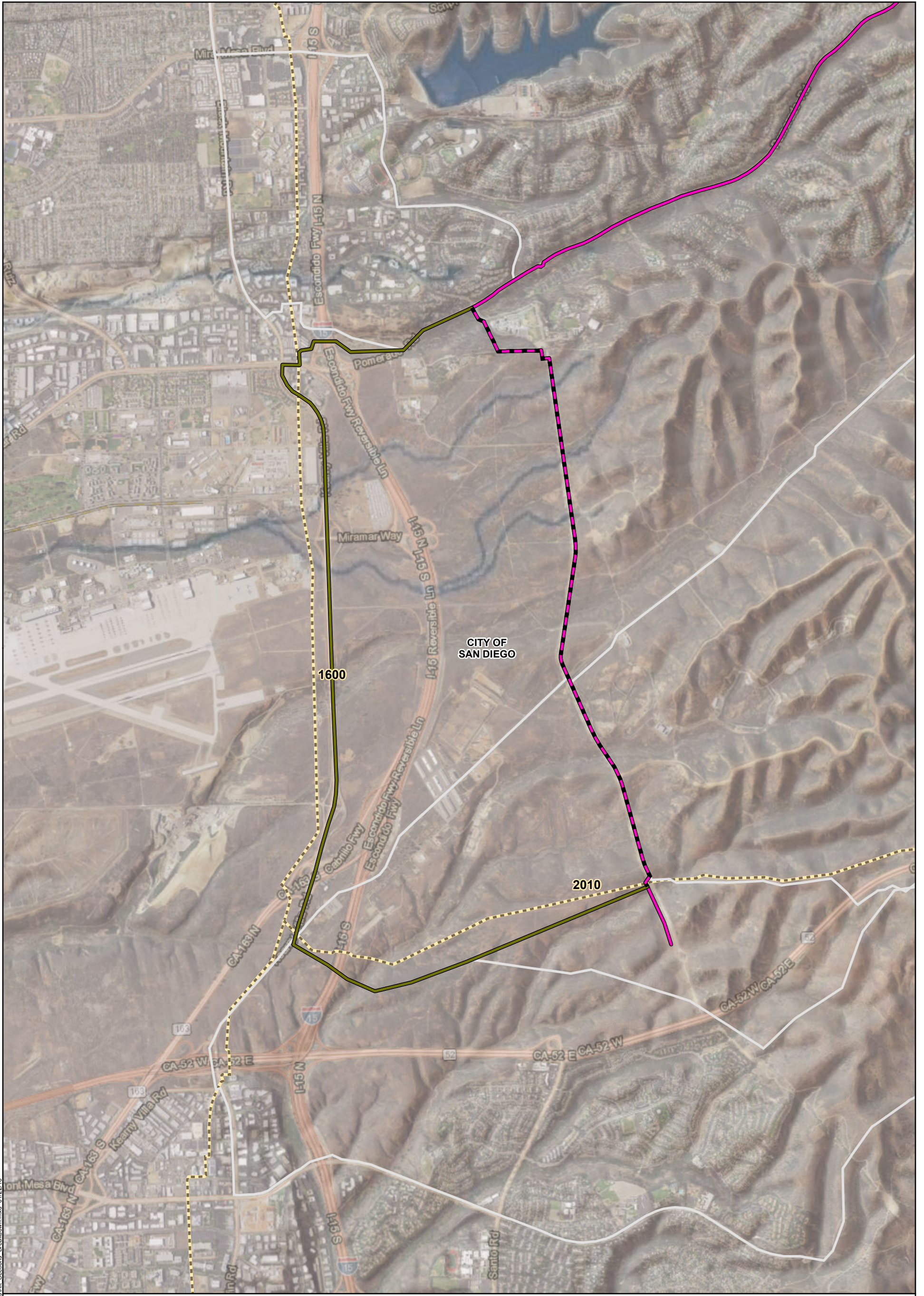
MXD:\PEA\Alternatives\Alt_Section_Breakdown.mxd 01/22/16

Attachment A: Proposed Project Route Segment Alternatives 13 of 19

Pipeline Safety & Reliability Project

- Proposed Route
- Creek Road Route Segment Alternative
- Spring Canyon Road Alternative shared section
- Corresponding Proposed Project Segment
- Other Alternative Sections
- Existing Transmission Line
- City/County Boundary

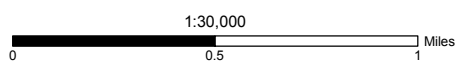
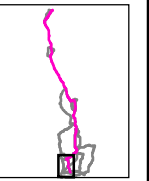


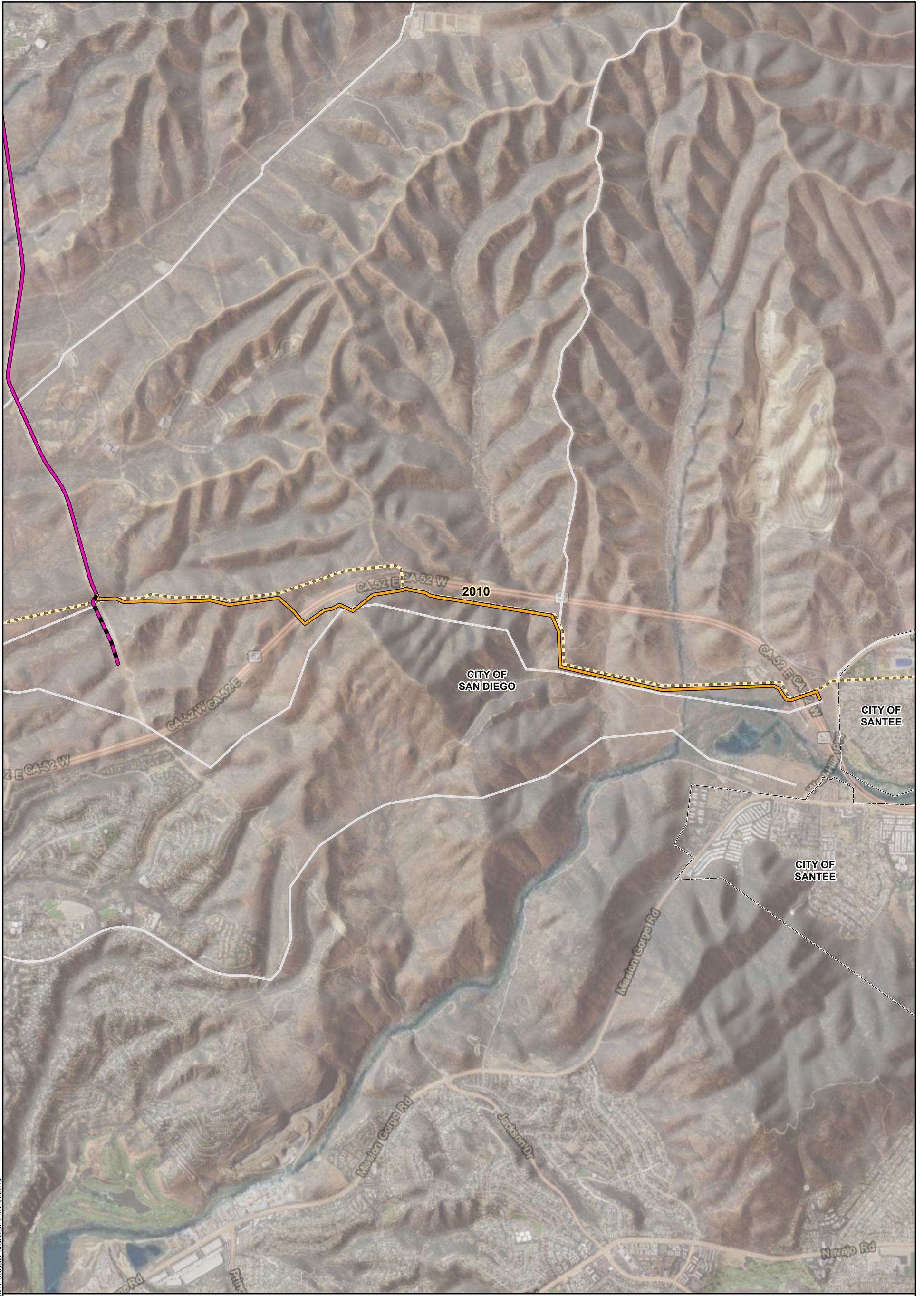


Attachment A: Proposed Project Route Segment Alternatives 14 of 19

Pipeline Safety & Reliability Project

- Proposed Route
- Kearny Villa Road Route Segment Alternative
- Corresponding Proposed Project Segment
- Other Alternative Sections
- Existing Transmission Line
- City/County Boundary

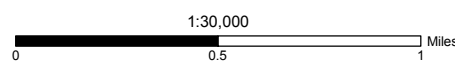
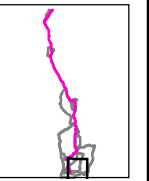


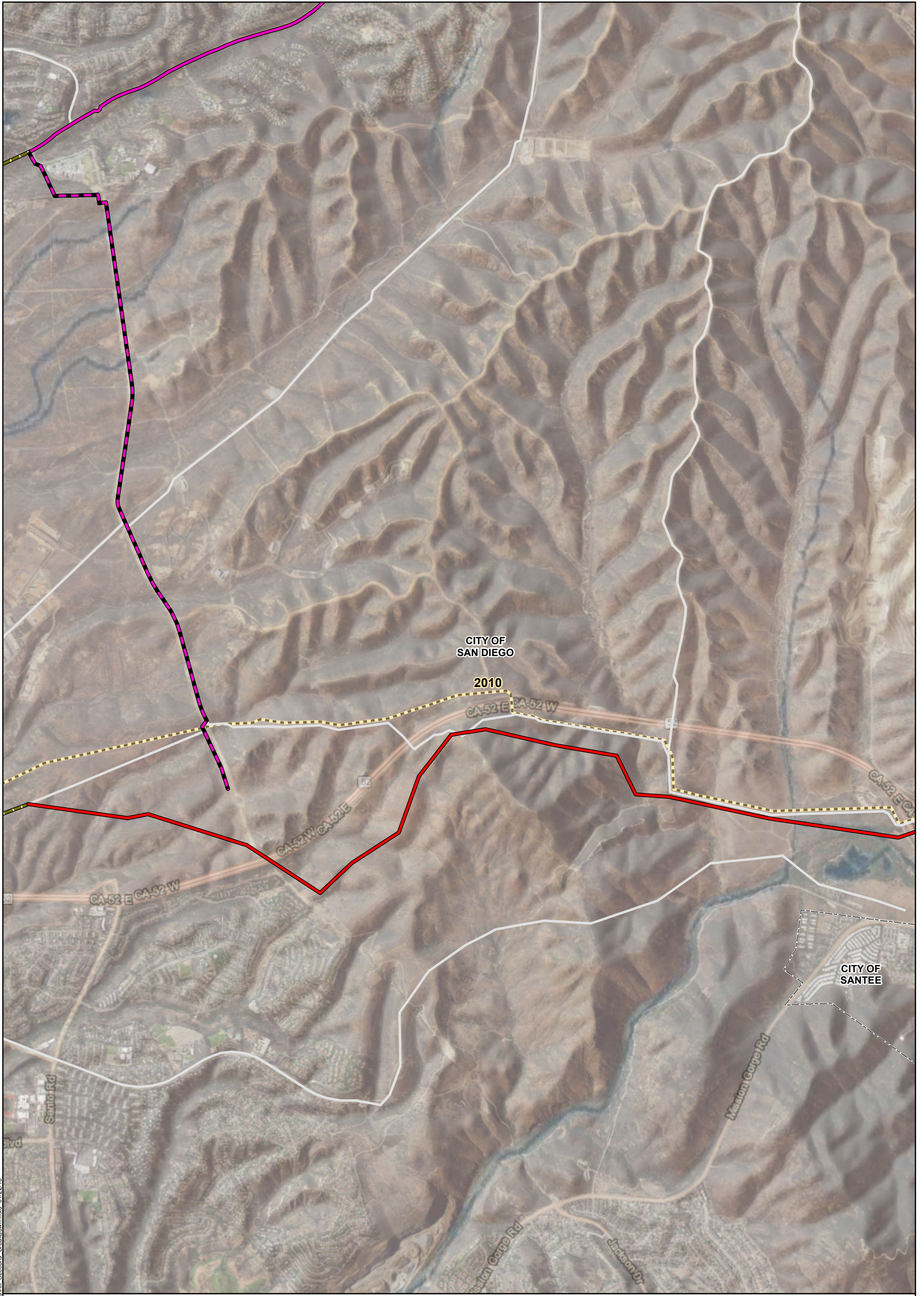


Attachment A: Proposed Project Route Segment Alternatives 15 of 19

Pipeline Safety & Reliability Project

- Proposed Route
- Mission Trails Route Segment Alternative
- - - Corresponding Proposed Project Segment
- Other Alternative Sections
- - - Existing Transmission Line
- City/County Boundary

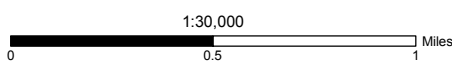
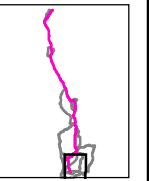




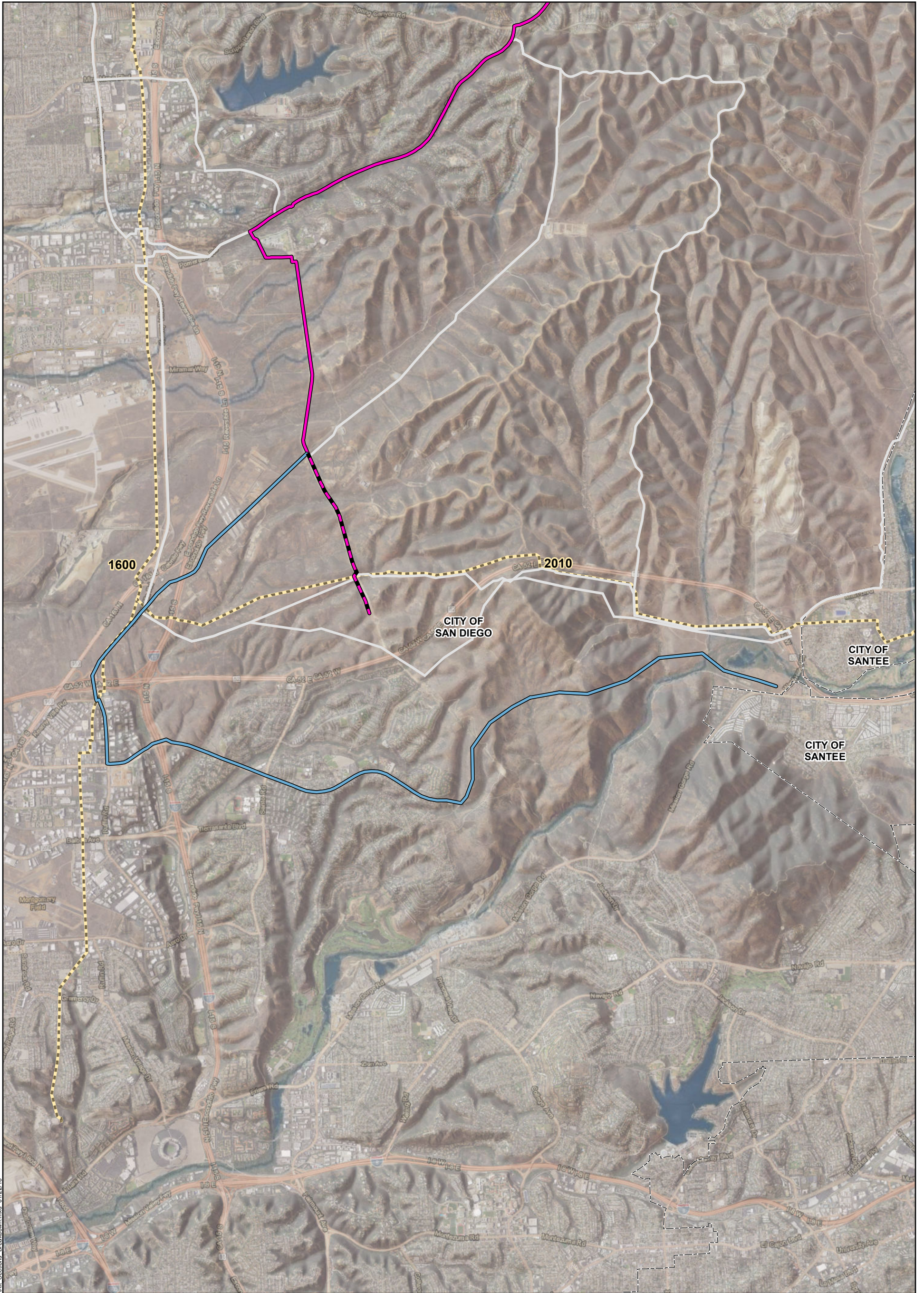
Attachment A: Proposed Project Route Segment Alternatives 16 of 19

Pipeline Safety & Reliability Project

- Proposed Route
- MCAS/Mission Trails Route Segment Alternative
- - - Existing Transmission Line
- - - Kearny Villa Road Alternative shared section
- - - Corresponding Proposed Project Segment
- Other Alternative Sections
- City/County Boundary



MXDs\PEAA\Alternatives\Alt_Sections_Breakdown.mxd 01/22/16

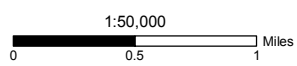
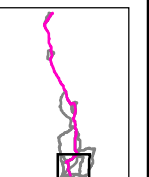


MXD:\PEA\Alternatives\Alt_Section_Breakdown.mxd 01/22/16

Attachment A: Proposed Project Route Segment Alternatives 17 of 19

Pipeline Safety & Reliability Project

- Proposed Route
- Clairemont Mesa Road Route Segment Alternative
- Corresponding Proposed Project Segment
- Other Alternative Sections
- Existing Transmission Line
- City/County Boundary

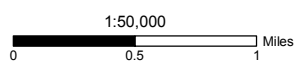
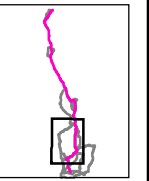




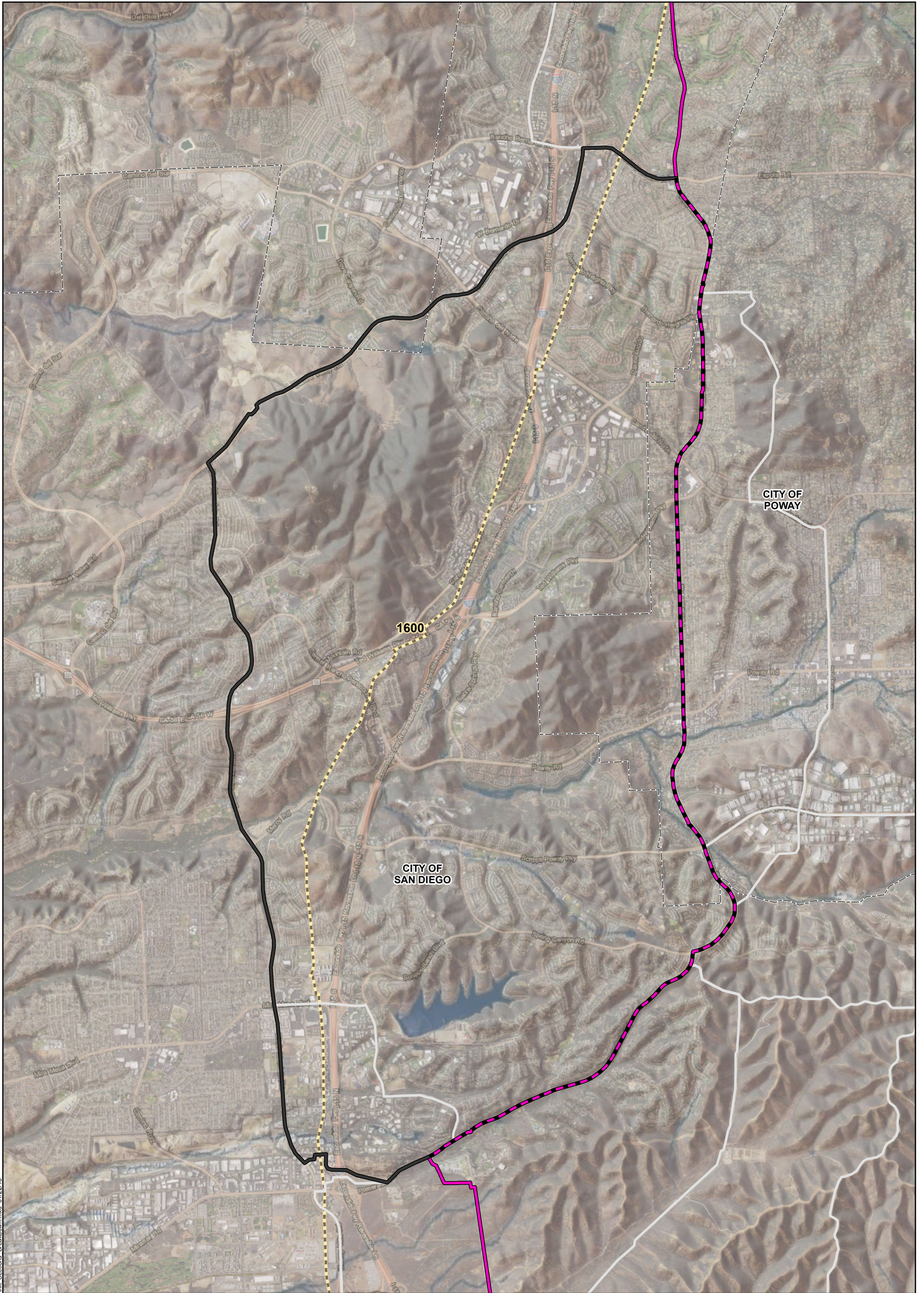
Attachment A: Proposed Project Route Segment Alternatives 18 of 19

Pipeline Safety & Reliability Project

- █ Proposed Route
- Black Mountain Option-Mira Mesa Route Segment Alternative
- Existing Transmission Line
- Corresponding Proposed Project Segment
- City/County Boundary
- Other Alternative Sections



MXDs\PEA\Alternatives\Alt_Section_ Breakdown.mxd 01/22/16



Attachment A: Proposed Project Route Segment Alternatives 19 of 19

Pipeline Safety & Reliability Project

- Proposed Route
- Black Mountain OptionRoute Segment Alternative
- - - Corresponding Proposed Project Segment
- Other Alternative Sections
- - - Existing Transmission Line
- City/County Boundary

